

Ann Fahy, Continuum, 2004



QUILT ART: INTERNATIONAL EXPRESSIONS

EDSEL & ELEANOR FORD HOUSE: JANUARY 28 - MARCH 25, 2012



EDSEL & ELEANOR FORD HOUSE



Bethan Ash, Cutting the Carbs - Shedding the Pounds, 2004

QUILT ART: INTERNATIONAL EXPRESSIONS

EDSEL & ELEANOR FORD HOUSE: JANUARY 28 - MARCH 25, 2012, TUESDAY-SUNDAY, 11AM-5PM, COMPLIMENTARY ADMISSION

Experience the vibrancy of Quilt Art: International Expressions, an exhibition featuring more than 30 quilts by a unique group of 22 contemporary quilt artists from eight countries. Quilt Art pushes the boundaries of the quilt medium, further presenting the quilt as an art form.



The artists draw on their diverse cultural backgrounds to bring unique approaches to their craft, making the artwork dynamic and challenging. Many of the artists first trained in other fields, yet found the tactile process of patterning, sewing, layering and joining fabric to be an ideal means of self-expression. The artists explore a range of abstract and thought-provoking ideas

with an ever-changing variety of surface techniques, combined with color, texture and stitch.

Quilt Art: International Expressions was organized by International Arts & Artists, Washington, D.C., in conjunction with Quilt Art.



PROGRAMS WITH LOCAL ARTISTS

FEBRUARY 4 : JOIN DESIREE VAUGHN FOR A DAY EXPLORING ARTWORK THAT WARMS THE IMAGINATION.



Artful Fabrics and Artful Quilts

11 a.m., \$10, \$7 for members

Painters usually don't talk about how the pigment feels in their hands. That's a benefit that textile art has over other visual arts; adding another sense, touch, makes it three-dimensional. During this lecture Desiree will explore the "how to" for painting and mark-making on fabric.

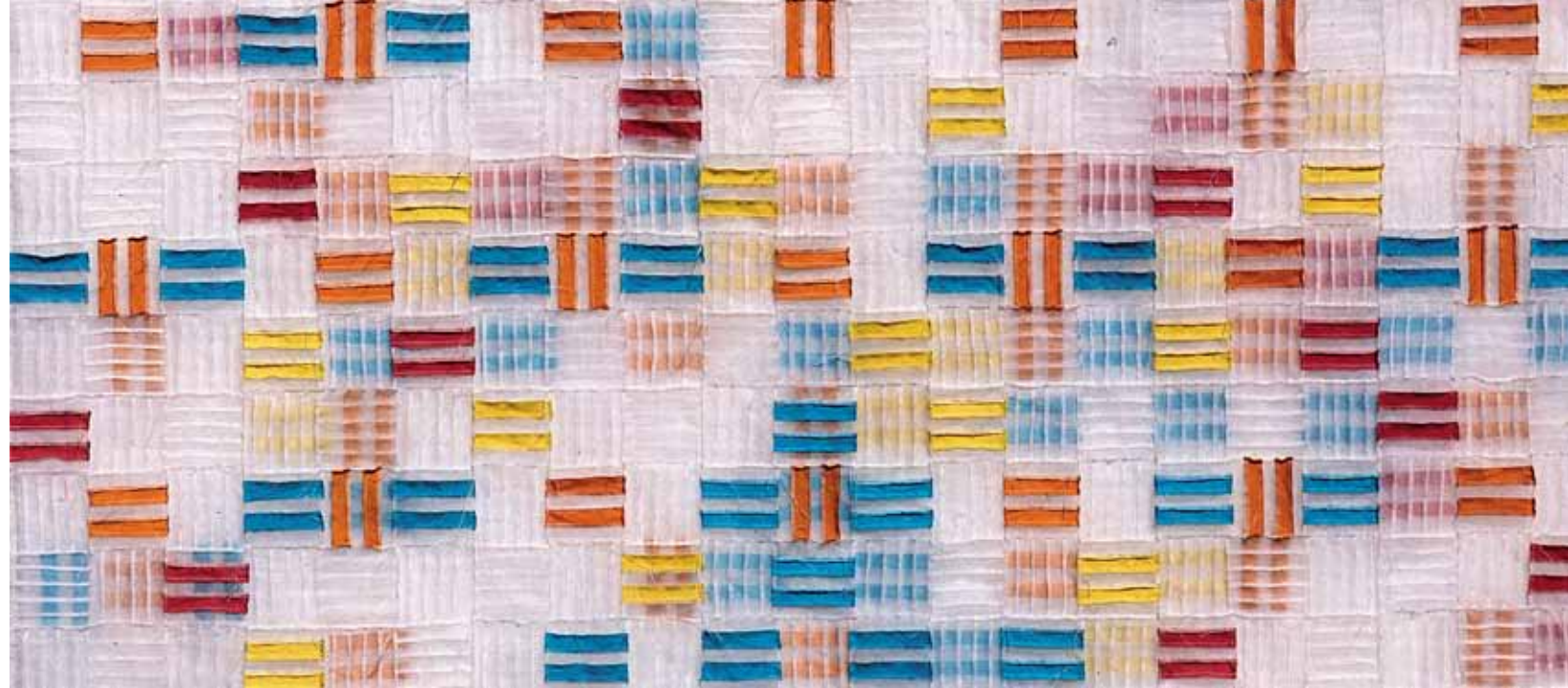
Introduction to Painting on Fabric Workshop

1 - 4 p.m., \$65, \$60 for members

Quilters as well as inspired students who want to design their own fabric will learn the basics of the paints, tools and materials used to apply a transparent paint to fabric. Fun and experimentation are encouraged! Students will create at least 4 "fat" quarters of their own painted fabric.

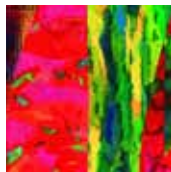
Gain inspiration and insights from local artists who will share their collections, techniques and knowledge in a series of trunk shows, receptions, workshops and lectures. To make reservations, visit www.fordhouse.org. For more information, call 313.884.4222.

Inge Hueber, *Nine-Patch-Variation I*, 2004



PROGRAMS WITH LOCAL ARTISTS

FEBRUARY & MARCH
JOIN ARTISTS SHARING THEIR CRAFT.



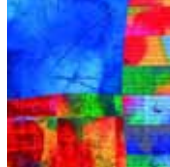
FEBRUARY 13

Tea & Textile: Quilted Clothing

Michelle Mitchell

1 – 3 p.m., \$35, \$30 for members

Gathers, crinkles, beads, texture embellishments. In other words - Wearable art. Spend an afternoon with an intimate look at an outstanding collection of quilted clothing created by Michelle Mitchell. Michelle, who has won numerous awards and has served as a judge at the AQS National Show in Paducah, KY, will share ideas for constructing your own quilted clothing. The discussion and trunk show will be followed by a delightful offering of tea and savory treats.



MARCH 1

Inside a Private Collection

Kempf Hogan

6:30 – 8:30 p.m., \$25, \$20 for members

Join us for a truly eclectic evening. Enjoy a wine and cheese reception followed by the exploration of Kempf Hogan's remarkable private collection of folk and contemporary textiles. The evening begins with a look at African American story quilts from the deep south followed by several contemporary studio quilts and needlepoint rugs of his own design.



Janet Twinn,
Re-Configuration
2, 2004

MARCH 10

Quilting for Children

Laura Rodin

10 a.m. – noon, \$10 each

Students will get hands on experience with sewing and leave with a finished product. Perfect for scout groups seeking merit badges!



To make reservations,
visit www.fordhouse.org.
For more information,
call 313.884.4222.

MARCH 19

Making Quilts and Making Art

Judi Warren Blaydon

6:30 – 8:30 p.m., \$25, \$20 for members

Spend an evening exploring Judi Warren Blaydon's breathtaking paintings, quilts and stitched paper prints. She'll reveal what inspires her in her quilt making and will explore the recurring themes in her creations. She'll share examples of work that have touched her heart with their honesty, poetry, eloquence, exemplary craftsmanship, expressive color and dynamic design. A wine and cheese reception will follow the trunk show and discussion.



Janet Twinn,
Curve, 2004

MARCH 22

Improvisational Art

Carole Harris

6:30 – 8:30 p.m., \$25, \$20 for members

Begin the evening with a wine reception and explore the rhythmically constructed, non-traditional tapestries of artist Carole Harris. Her works have been exhibited nationally in museums and galleries and are composed of hundreds of richly colored fabrics which are cut, overlaid, appliquéd, pieced and quilted. A professional interior designer and fiber artist, she creates one-of-a-kind, improvisational works that provide warmth and texture to enhance any environment.





EDSEL & ELEANOR FORD HOUSE

1100 LAKE SHORE RD.
GROSSE POINTE SHORES, MI 48236
WWW.FORDHOUSE.ORG

QUILT ART: INTERNATIONAL EXPRESSIONS

EDSEL & ELEANOR FORD HOUSE:
JANUARY 28 - MARCH 25, 2012

Sara Impey, Positivity, 2004

NONPROFIT ORG
US POSTAGE
PAID
DETROIT, MI
PERMIT NO.
2226